



William & Mary
School of Education

Forging ahead together.

November 2021 :: Teachers in Residence :: Education Week Schedule :: Faculty Spotlight



Teachers in Residence hone their skills through partnership with Newport News Public Schools

Through a new partnership between the division and William & Mary, the Teachers in Residence program is providing aspiring teachers both financial and professional support as they pursue a master's degree in teaching, in exchange for a commitment to teach in the division after graduation. [More](#).

FROM THE DEAN



Next week, we celebrate our second annual **Education Week** in the School of Education. This event provides us with an opportunity to celebrate our profession but also to express our gratitude for all educators. **The simple act of saying 'thank you' is something that we likely do not do enough but it's important to say, and to say often.**

I see the hard work and deep commitment of educators both here in the school and out in the community; your dedication to the students, families, and communities that you serve is an inspiration to me. I hope that each of you will join me in actively thanking an educator, especially those that have been an important part of your lives, and that you'll find time to celebrate with us next week.

— Dean Rob Knoeppel



Chandra B. Floyd Ph.D. '20 wins dissertation award for her work towards equity in gifted education

Floyd has been named the second place winner in the Dissertation Award Competition for 2021 by the National Association for Gifted Children's Research and Evaluation Network for her dissertation, *Promoting Equity in Gifted Education: Stories from Selected Virginia Gifted Education Leaders*. [More.](#)



W&M and Colonial Williamsburg announce Bray School's future location, launch initiative to research its history and legacy

The two educational institutions have announced the creation of a joint research initiative to document the history of the school and its students, which will lead to new interpretive programming that explores the complicated history of this 18th-century institution dedicated to the education of Black children. [More.](#)

FACULTY SPOTLIGHT



Rick Gressard, professor emeritus, and **Spencer Niles**, professor of counselor education, received the Legacy Award from the Association for Counselor Education & Supervision (ACES). The award recognizes members that made a significant and lasting impact on the organization and the field of counseling.



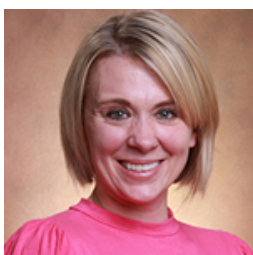
Jessica Martin, assistant clinical professor of counselor education, was recognized as a 2021 recipient of the Winston-Salem State University (WSSU) 40 Under 40 Alumni Award. This award is given bi-annually to recognize service to community, professional achievements, and support of WSSU and its initiatives.



Jennifer Cross, director of research at the Center for Gifted Education and Institute for Research on the Suicide of Gifted Students, joined the Ways to Flourish podcast, published by W&M Health & Wellness, to discuss her work with Campus Connect and suicide prevention efforts. [Listen to the podcast.](#)



Jamel Donnor, associate professor of education, received a 2021 Derrick Bell Legacy Award from the Critical Race Studies in Education Association (CRSEA). The annual award honors scholars for their commitment to advancing social justice and educational equity through their teaching, research, writing, and/or direct community action. [Watch the award video.](#)



Meredith Kier, associate professor of science education, **Lauren Grob '22**, **Kelly Leffel Ph.D. '23**, and colleagues published "Culturally Relevant Partnerships in the Engineering Design Process" in the Nov/Dec *Science Scope* magazine from the National Science Teaching Association. [Read the article.](#)

UPCOMING EVENTS

- Nov. 15: [Courageous Conversation: The Path Forward for Equity](#)
Nov. 16: [Higher Ed Salon: Dr. Jorge Burmicky](#)
Nov. 16: [Faculty Research Brown Bag Talk with Dr. Elizabeth Talbott](#)
Nov. 17: [2021 Hornsby Lecture: Dr. Howard Fields](#)
Dec. 10: [Expanding Your Implicit Bias IQ Workshop](#)

Upcoming [Admissions Webinars](#):

- Nov. 15: [Elementary, ESL/Bilingual and Special Education Programs](#)
- Nov. 17: [School Psychology](#)

SHARE A STORY

Let us know what you're up to!

MAKE A GIFT

Support the School of Education



William & Mary
School of Education

Message sent by:

William & Mary School of Education, William & Mary
PO Box 8795, Williamsburg, VA 23185