



Natoya Haskins named Director of Diversity & Inclusion

Natoya Haskins, associate professor of counselor education, has been named the first Director of Diversity & Inclusion for the School of Education. [More.](#)

FROM THE DEAN



Welcome to a new year and a new semester. As we forge ahead with our work, we see a light at the end of the pandemic tunnel, however distant it might still be. And while we hold that glimmer of hope, we must also recommit to the safety measures that mitigate the harm of the virus in our communities.

How do we keep going? **We remember our purpose.** Ask yourself: why did you become an educator? For me, it's about equity, opportunity and the power of education to transform lives. I keep that idea at the center of my work, and it gives me courage to overcome the obstacles I encounter.

NEWS & NOTES



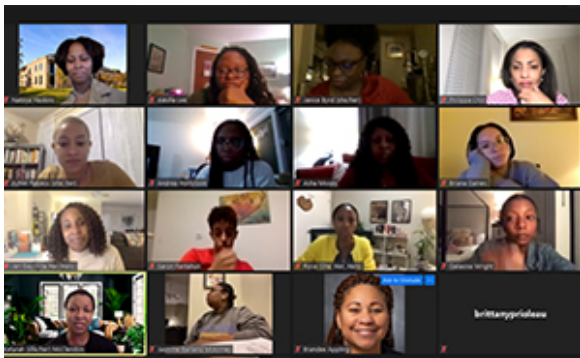
W&M team leads evaluation of national drug prevention program

Associate professors of counseling, Patrick Mullen and Daniel Gutierrez, along with a team of School of Education graduate students, are serving as external evaluators for a new class-based drug intervention program called GPS for Success. [More.](#)



2E at W&M conference to focus on twice-exceptional students

The second annual conference, hosted by the W&M Center for Gifted Education, will be held virtually Feb 12-13, 2021 and will provide information, resources, support and community-building opportunities to educators, administrators, parents and practitioners. [More.](#)



National affinity group for Black women in counseling provides support, connection

This fall, Natoya Haskins, associate professor of counselor education, launched Metamorphosis, a national affinity group for Black women pursuing graduate degrees in counseling. [More.](#)



Jamel Donnor to serve as chair of AERA Social Justice Action Committee

Jamel Donnor, associate professor of education and affiliated faculty in Africana Studies and American Studies, has been named chair-designate of the Social Justice Action Committee of the American Educational Research Association. [More.](#)

UPCOMING EVENTS

Feb. 4: [How to Talk to Your Kids about Race](#)

Feb. 12-13: [2E at W&M: Twice-Exceptional Conference](#)

Feb. 13, 20 & 27: [Center for Gifted Education Saturday Enrichment Program Session I](#)


Feb. 22: [SURN Family Engagement Academy](#)

Mar. 6, 13 & 20: [Center for Gifted Education Saturday Enrichment Program Session II](#)


Mar. 26: Day for Admitted Students

STUDENT SPOTLIGHT

WHY W&M?



Briana Sinden
M.Ed. in Clinical
Mental Health and
Addictions Counseling



William & Mary
School of Education

EDUCATION.WM.EDU

“My field experiences have been the most influential part of the [Clinical Mental Health and Addictions Counseling](#) program. The hands-on and collaborative experience of working at the New Leaf Clinic has been invaluable to my growth as a counselor, teaching me about the reflective process required to improve as a clinician and the resourcefulness of colleague consultation. I appreciate the opportunity to have a safe space to process a session, provide support for one another as counselors, and where I can think critically and consider different perspectives on a case.”

[Learn more about Briana.](#)

RESOURCES

Studio for Teaching & Learning Innovation: [W&M Instructional Resilience](#)

Support from W&M Libraries: [Remote Resources & Services](#)

Cohen Career Center: [Virtual Resources](#)

W&M Alumni Association: [Virtual Engagement Opportunities](#)

SHARE A STORY

Let us know what you're up to!

MAKE A GIFT

Support the School of Education



William & Mary
School of Education

Message sent by:

William & Mary School of Education, William & Mary
PO Box 8795, Williamsburg, VA 23185

[Update your information](#)

[Unsubscribe](#)