



HIGHER  
EDUCATION  
PROGRAM



William & Mary  
School of Education

November 2017 | [ASHE](#) | [Happenings](#) | [Alumni](#) | [Students](#) | [Faculty](#) | [Spring Courses](#)

## ASHE 2017: A Gathering in Houston

The Association for the Study of Higher Education (ASHE) held its 42nd annual conference in Houston, TX from November 9–11. Through this year's theme, *Power to the People*, attendees learned about ways in which "power dominates whose epistemologies are valued, which methods are legitimized and rewarded, and what counts as evidence" ([Harper, 2016](#)). Find out more [here](#) on ASHE President Harper's keynote address where he implored scholar-practitioners to ask better, consequential questions within higher education.



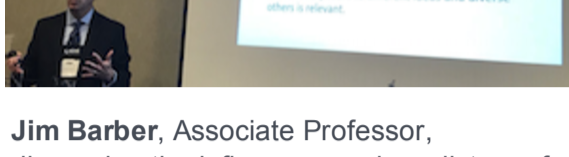
Pictured in the image above are program faculty (Pamela Eddy and Jim Barber), graduate students (Eric Liu, Yi Hao, Chris Markiewicz, and Amanda Armstrong), and alum Catherine Hartman (M.Ed. '14 and current doctoral student at UT Austin). Check out [this](#) list of William & Mary presenters and additional photos from the conference below!



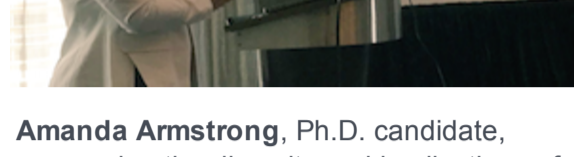
Yi Hao (Ph.D. student), Chris Markiewicz (M.Ed. student), and Professor Pamela Eddy following their session on the power of situated learning.



Nathan Alleman Ph.D. '08, Associate Professor at Baylor University, addressing the aftermath of tenure denied.



Jim Barber, Associate Professor, discussing the influences and predictors of students' integration of learning.



Amanda Armstrong, Ph.D. candidate, uncovering the diversity and implications of nonreligious students' identity constructs.

## Save the Date: Alumni Chapter's Tribe Thursday

Join EPPL department faculty at the Williamsburg–Peninsula Alumni Chapter's December Tribe Thursday. Local alumni gather on the *second Thursday of each month* for a happy hour with invited guests from the university. We hope our local Higher Education alumni will come out to see faculty, learn about School of Education updates, and meet other local alumni. No RSVP needed. The alumni chapter will provide small appetizers and drinks are pay-as-you-go!

**When:** December 14, 2017 5–7PM

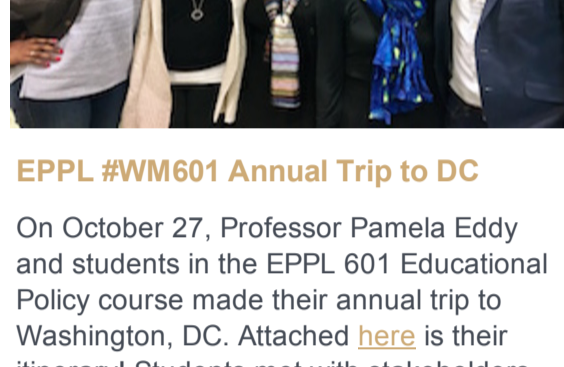
**Where:** Revolution Golf and Grille, High Street, Williamsburg

## Refer Students to Our Programs

We are pleased to launch the "Refer-a-Student" button! Do you know someone who would make an excellent addition to one of our programs? Use the **Refer-a-Student button at the end of the newsletter** to share the individual's name and email address. We will contact the prospective student with information about our programs.

Curious about our programs' criteria? Click [here](#) to learn more about our degree offerings and current admissions requirements. Thanks to those of you who have referred students already, and we look forward to more referrals.

## WHAT'S HAPPENING?



### EPPL #WM601 Annual Trip to DC

On October 27, Professor Pamela Eddy and current students gathered for the final Higher Ed on Tap event of the fall semester. Conversation centered around the "Business of Higher Ed" with [these questions](#) igniting discussion of rich universities and income inequities, funding cuts, and costs of operations. Soon, we will send out the schedule of Higher Ed on Tap events for the spring semester.



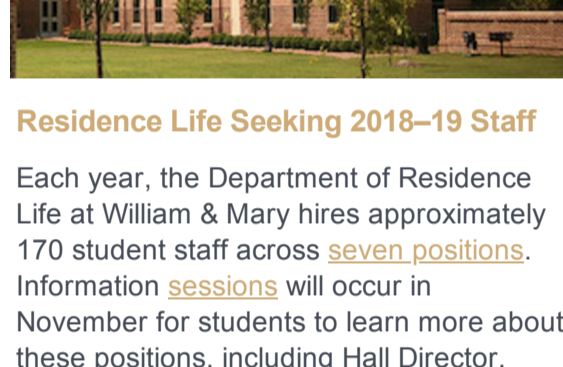
### Another Successful Higher Ed on Tap

Students were also excited to be joined by program alumni, pictured above from left to right: Erin Battle (M.Ed. '15), Roxane Adler Hickey (M.Ed. '02), Cristin Touts (M.Ed. '18), Professor Pamela Eddy, and Steven Lovern (M.Ed. '17).



### Designing Your Career Workshop

Each year, the Department of Residence Life at William & Mary hires approximately 170 student staff across [seven positions](#). Information [sessions](#) will occur in November for students to learn more about these positions, including Hall Director, Complex Director, and Graduate Resident Assistant. If interested, the [application](#) went live on November 1 and will remain open until Sunday, January 14, 2018.



### Residence Life Seeking 2018–19 Staff

A workshop entitled "Designing Your Career" was held on November 3 for students, staff, and faculty at the Jim and Bobbie Ukrop Innovation Design Studio in the Mason School of Business. The workshop was facilitated by Dr. Gene Roche (Executive Professor), Dawn Edmiston (Ed.D. student and Mason faculty member), and Johann Ducharme (Ph.D. student). Learn [more](#) on how to sign up for the Spring 2018 workshop!

## ALUMNI *In the* SPOTLIGHT

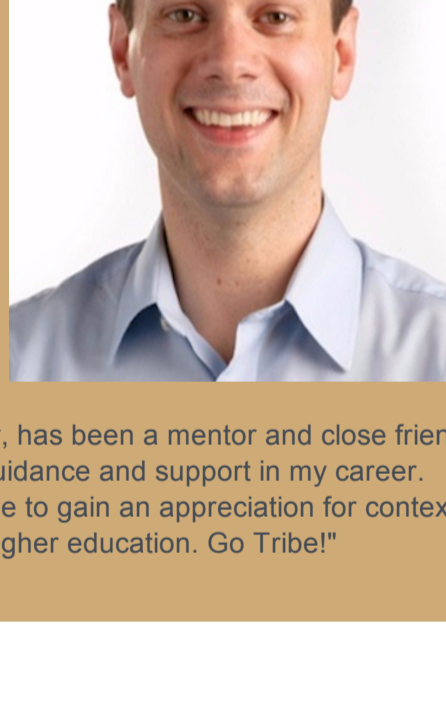
### Mason Becomes VCSU's 13th President

On November 3, 2017, [Tisa Mason](#) (Ed.D. '92), President of Valley City State University, was selected by the Kansas Board of Regents to become the next president of Fort Hays State University in Hays, Kansas. Learn more [here](#) from Mason's news release by the School of Education.



### Alum Reflects on Program Mentor

[John Butt](#) (M.Ed. '08) is the newly hired enrollment navigator for University of Colorado, Denver's distance education unit where he will be providing recruitment and enrollment management support for incoming online students. John shared, "The Higher Ed Master's program has been instrumental in advancing my career. I have been able to utilize student development theory in my work because of the knowledge I gained and my administration and policy courses prepared me to interact with university and community leaders in a confident and informed way. Dr. Dot Finnegan, in particular, has been a mentor and close friend through the years and I still rely on her for guidance and support in my career. Her classes and perspective have allowed me to gain an appreciation for context, strategy, and seeing the 'big picture' within higher education. Go Tribe!"



## STUDENT HIGHLIGHTS



### A New Holmes Scholar

Danielle Giscombe, a third-year Ph.D. student, has been recently selected as a new [Holmes Scholar](#). She is a counselor and coordinator of counseling working full-time at Tidewater Community College, Chesapeake Campus. Giscombe is dedicated to promoting innovation in higher education by focusing on community building, collaboration, and civic engagement through projects, research, and relationship building.

## FACULTY HIGHLIGHTS

### Cole Spans Three Cities in Two Weeks

Eddie R. Cole, Assistant Professor of Higher Education, has been busy discussing his research initiatives across the country! He presented in three cities over two weeks this fall, including a talk at the Princeton University Mudd Library in late October followed by November presentations at conferences for the [History of Education Society](#) in Little Rock, AR, and the [Association for the Study of Higher Education](#) in Houston, TX.



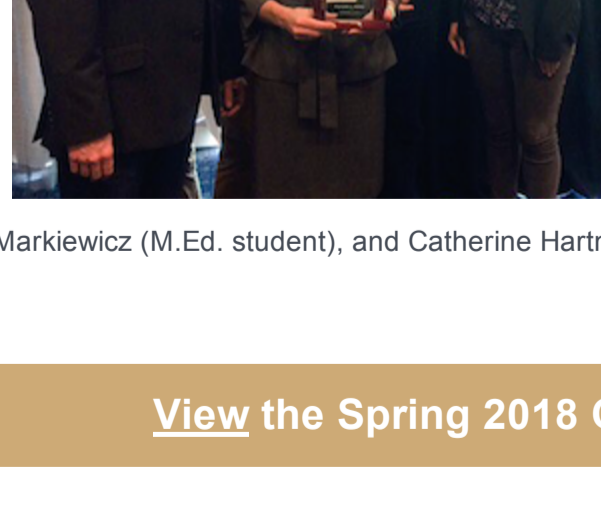
Pictured to the right are Professor Cole and two of his Spencer Foundation Fellowship colleagues at ASHE, Corbin Campbell (Assistant Professor at Teachers College, Columbia University) and Julie Posselt (Assistant Professor at the University of Southern California).



### Eddy Receives Barbara Townsend Lecture Award

Professor Pamela Eddy was awarded the Barbara Townsend Lecture during the 2017 annual conference of the Association for the Study of Higher Education ([ASHE](#)). This award, and its accompanying lecture, were sponsored by the Council for the Advancement of Higher Education Programs ([CAHEP](#)).

Prior to receiving this award (pictured first on the left), Professor Eddy gave an inspiring and thought-provoking speech on *Community College Leadership Frontiers: Scouting and Developing Talent*. In her talk, she urged the field to seek new models of leadership, including changing the norms around who leaders are and where they reside at the institution. She noted, "We need to change from focusing on position titles to saying that we're educators because we're all working for student success."



Markiewicz (M.Ed. student), and Catherine Hartman (M.Ed. '14).

## [View the Spring 2018 Course Schedule](#)

### SHARE A STORY

Let us know what you're up to!

### MAKE A GIFT

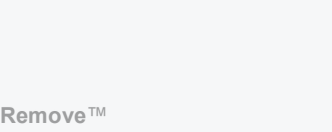
Support the Higher Education Program

### TRAVEL FUNDING

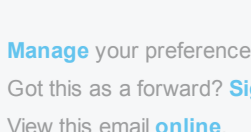
Students: [Apply here](#)

### REFER A STUDENT

Refer a prospective student



Share this email:



[Manage](#) your preferences | [Opt out](#) using TrueRemove™  
Got this as a forward? [Sign up](#) to receive our future emails.  
View this email [online](#).

P.O. Box 8795  
Williamsburg, VA | 23187 US

This email was sent to .

To continue receiving our emails, add us to your address book.

